

# Installation and Operating of DTH

## 1. Drill rig installation

- (1) Remove bucket of excavator.
- (2) Move the rig to the front of the excavator.
- (3) Turn the rig over 90 degrees by hoisting with excavator.
- (4) Install the rig on the excavator as shown in the picture.







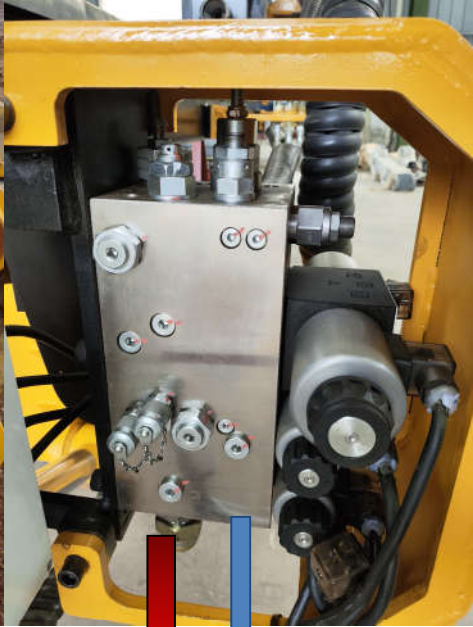


(5) Connect the oil inlet of the excavator crusher hammer with the oil inlet of the drilling rig valve. then connect the oil outlet of the excavator crusher hammer with the oil outlet of the drilling rig valve (As shown in the figure, oil port: P port to P port; T port-T port;). and The type of hydraulic pipeline is 4SP19-2800mm. The number of this type pipes is two.





**P** **T**



**P** **T**





P T

The high-pressure oil port of the crushing hammer is generally close to the side of the cab.

## 2. Installation of oil unloading pipeline, Air pipeline and Control line

The oil unloading pipeline, air pipeline, and control line extend along the excavator's large and small arms to the rear end of the excavator, and are fixed together with the crushing hammer pipeline using a rolling strip.

The pipeline is 2SP-M18-15000mm. The air pipes is 2SP-M52(90° )-1 1/2-15000mm.

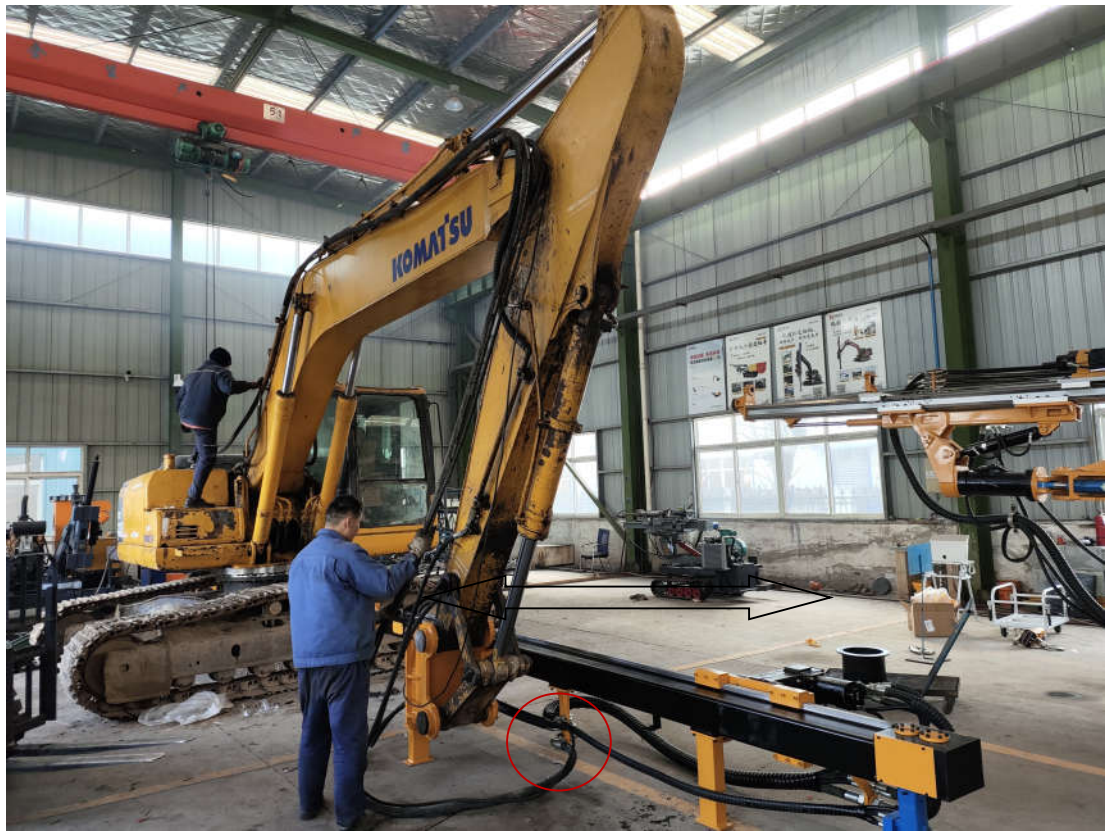
The electrical wires is 15000mm, 10cores.



The red line in the following figure shows the pipeline direction.











**Air pipeline**

**Oil unloading pipeline**



**Control line**

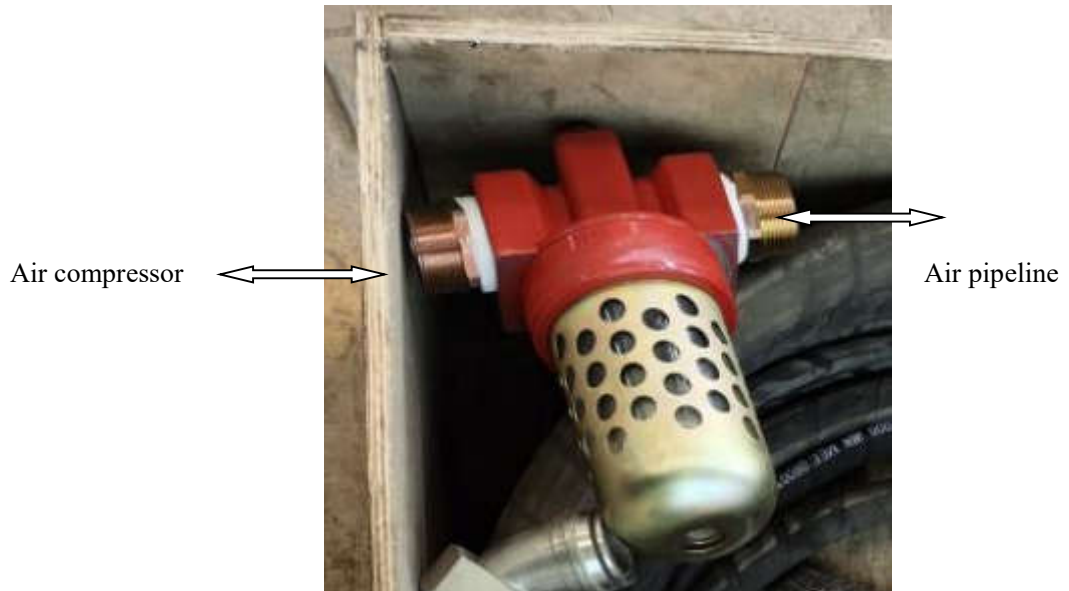


Leave enough space at the joints.



The oil unloading pipeline can be directly connected to the hydraulic oil tank or connected to other oil unloading pipelines to return to the oil tank.

The other end of the Air pipeline is connected to the oil mist collector. Attention direction, the oil mist collector (IN) connected to air compressor.



Add oil two to three times per shift.



#### 4. Installation of Electronic Control System

##### (1) Fixation of electronic control box



##### (2) Installation of Control Circuit

As shown in the figure, the wiring interface of the control box is connected with the wiring box on the guide rail. The length of the line is 15 meters, and the installation form of the line joint is the same. This line is fixed along the excavator arm and main arm, and enters the cab through the cab skylight.

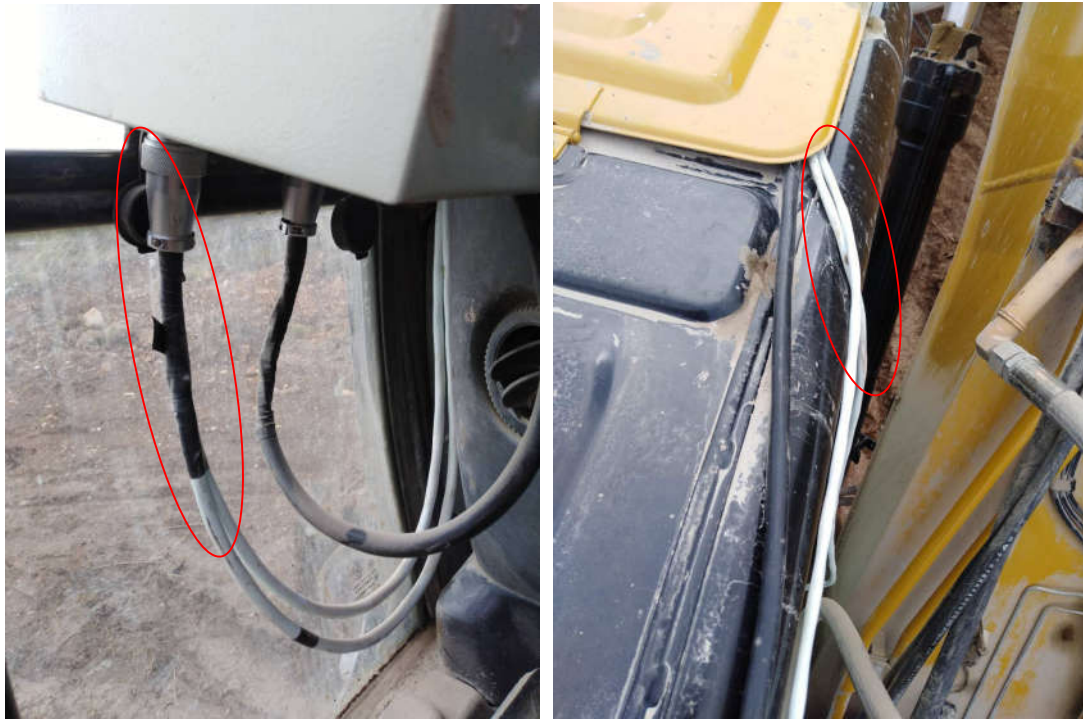






(3) Installation of Power Wire and Air Compressor Control Wire

As shown in the figure, this main wire has two lines. The line is connected to the excavator bottle (DC24V).



Red connected to 24V+ positive pole. Blue connected to 24V- negative pole.

## 5. Operate the rig

(1)After choosing the location of the hole to be drilled, turn on the main power switch and open air compressor.

(2)Then turn on the rotary switch to the right to rotate the drill pipe. At this time, step on the breaker switch to make it work

(3)Open the push feed button to make the bit touch the rock , start drilling.

(4)When the rotary speed is not uniform or the drill pipe is stuck, it is necessary to open the push switch in time to reverse gear and lift the drill pipe up in order to prevent the drill pipe from being stuck and unable to be removed.

(5)When the drilling depth is enough, turn on the push back switch and lift the drill pipe up.

(6)Turn off the rotary, push switches.

(7)Turn off the air compressor switch, turn off the main power supply,.

(8)Please operate in strict accordance with the above basic order.



Air Compressor and Impact do not need to be used (DTH).